

# Your Private Safari Adventure in Namibia

Welcome to **Touristlads** — Africa's Most Trusted Adventure Specialists. This is your personal guide to a bespoke, luxury Namibia safari, crafted entirely around you. From the crimson dunes of Sossusvlei to the wildlife-rich plains of Etosha, every moment has been designed to exceed your expectations.

☆ PRIVATE & EXCLUSIVE

🛡️ BOOK WITH CONFIDENCE

📍 TAILORED JUST FOR YOU



## Your Journey

# What's Inside This Guide

Everything you need to know before you depart — from practical travel tips to ethical travel principles. We've prepared this guide so your safari feels seamless, informed, and utterly luxurious from the very first page.

01

---

### What's Included & Not Included

A clear breakdown of everything covered in your package and what to plan for separately.

02

---

### Practical Travel Information

Visas, health, luggage limits, arrival logistics and insurance essentials.

03

---

### Safari Guide & Preparations

What to wear, what to pack, meals, weather, and how to stay connected.

04

---

### Environmental, Money & Ethics

Responsible travel, tipping guidelines, souvenir advice and eco practices.

05

---

### FAQ, Testimonials & Partners

Real guest stories, your most important questions answered, and trusted partners.

# What's Included in Your Private Safari

When you travel with Touristlads, the finest details are taken care of. Your package is designed to deliver seamless luxury — so you can focus entirely on the experience.



## Luxury Accommodation

Twin-share en-suite rooms in hand-picked lodges and tented camps. Private room available with supplement.



## All Specified Meals

Breakfast, lunch and dinner as per your personalised itinerary — freshly prepared by expert lodge chefs.



## Private 4x4 Vehicle

Your own pop-up roof safari vehicle and dedicated expert guide-driver for the full duration of your trip.



## All Park Fees & Excursions

National park entry fees, all game drives, guided excursions and scheduled activities — fully covered.



## 24/7 Support

Our team is available around the clock throughout your journey, with a price-match guarantee and free cancellation within 48 hours.

**Not included:** International/domestic flights, visas, travel insurance, alcoholic & soft drinks, personal gratuities, snacks between meals, and any items of a personal nature (laundry, postage, etc.).

# Practical Travel Information

A smooth journey begins with excellent preparation. Here's everything you need to arrange before you fly.

## Visas & Arrival

Namibia's entry requirements vary by nationality. Many passport holders are visa-exempt (Australia, UK, USA, Germany, Japan and others), while some require an e-visa or visa on arrival. Always verify your status on the **Namibia E-Services (MHAISS)** portal before travel.

Your private airport transfer to/from **Hosea Kutako International Airport (WDH)** is included. Your dedicated guide will meet you with a Touristlads sign on arrival. Excess luggage can be stored securely at your Windhoek hotel.

## Passport, Insurance & Health

- Passport valid for **6+ months** beyond return date, with blank pages
- Comprehensive travel insurance with emergency evacuation is **mandatory**
- Recommended vaccinations: Hepatitis A & B, Polio, Typhoid, Tetanus
- Malaria prophylaxis advised for northern and eastern regions — use repellent and cover up at dusk
- All guests must sign an indemnity form (sent with booking confirmation)

## Luggage Limits

Maximum **20 kg per person** in soft bags for 4×4 loading. One small daypack and camera gear travel with you in the vehicle. Excess luggage stored free of charge in Windhoek.

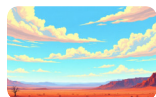
# Safari Preparations & What to Expect

Your private safari is 100% yours — no fixed departure times, no shared vehicles. Your expert guide-driver will collect you from your hotel at the time confirmed in your personalised voucher. Here's how to prepare for every golden moment.



## What to Wear

- Lightweight, breathable neutrals — khaki, beige, olive
- Long-sleeved shirts and trousers for sun, insects and thorns
- Wide-brimmed hat with chin strap and polarised sunglasses
- Sturdy closed-toe shoes or lightweight hiking boots
- Warm layers for chilly early mornings and evenings
- Rain jacket (essential November–April)




## Namibian Weather

Namibia enjoys **300+ days of sunshine per year**. Winter (May–Sep) brings warm days around 25°C and cold nights — pack layers. Summer (Oct–Apr) sees hot days up to 35°C with possible afternoon thunderstorms. Sun protection is non-negotiable year-round.



## Meals & Culinary Experience

Your guide and lodge chefs handle all shopping, preparation and cooking. Dietary requirements are fully accommodated — simply advise us on your booking form. Breakfast includes cereals, fresh fruit, yoghurt and toast. Lunch features salads, cold meats or soup. Dinner rotates between curries, braai, stir-fries and pasta.

 **Game Drive Timings:** Drives begin at first light ( $\approx$  6:00–8:00 AM) for optimal wildlife sightings and conclude during the golden hour. You keep the same expert guide-driver throughout your entire private safari.

# Your Packing List

Pack smart, pack light, and arrive ready for adventure. All lodges provide electricity (South African 3-pin plugs) and en-suite bathrooms. USB ports are available in your private vehicle.

## Clothing & Footwear



- Neutral shirts, shorts and long trousers
- Sturdy closed-toe shoes or hiking boots
- Wide-brimmed hat, sunglasses, warm layers
- Rain jacket and swimwear

## Toiletries & Health



- High-SPF sunscreen and insect repellent
- Personal medication and first-aid basics
- Malaria prophylaxis (if applicable)

## Electronics



- Camera with spare batteries and memory cards
- Phone, charger and universal adapter
- Binoculars for game viewing

## Documents



- Passport (valid 6+ months), tickets, itinerary
- Travel insurance documents and emergency contacts
- Signed indemnity form

## Miscellaneous



- Reusable water bottle and neck pillow
- Earplugs, notebook and small daypack
- Cash in USD/EUR/NAD for tips and small purchases

Need a guide who speaks your language? We offer English, French, German, Spanish and other languages on request — simply let us know at booking.

# Travelling Responsibly

At Touristlads, luxury and responsibility go hand in hand. Private travel inherently reduces environmental impact, and we ask every guest to travel with intention and respect for Namibia's extraordinary natural heritage.

## Eco Essentials on Safari

- **Plastic bags are banned** in all Namibian national parks — bring a reusable cloth bag
- **Drones are strictly prohibited** without a special permit in all parks
- Use eco-friendly toiletry products wherever possible
- Respect wildlife — maintain distance and **never feed animals**
- Conserve water and reduce single-use plastic throughout your stay
- Support local businesses, artisans and community-led initiatives

## Money & Tipping Guidelines

The **Namibian Dollar (NAD)** is pegged 1:1 to the South African Rand — both are widely accepted. Major currencies can be exchanged in Windhoek, Swakopmund and at the airport. Cards are accepted at lodges; carry cash for remote areas and tips.

## Recommended Gratuities

- **Groups:** USD \$35–50 per day (shared among the team)
- **Solo travellers:** USD \$10–20 per day
- Prepare a tip envelope at your final hotel — USD, EUR or NAD all accepted

## Responsible Social Media

Please disable GPS/location tagging on any photos of rhinos to protect against poaching. We'll create a private photo album for you through our platform.

# Ethical Souvenir Shopping

The souvenirs you bring home tell a story — make sure it's one you're proud of. Before purchasing, ask yourself four essential questions:

## What is it made of?

Ensure materials are legal, sustainably sourced, and do not involve endangered species or protected wildlife.

## Where did it come from?

Favour products made by local artisans and community cooperatives that benefit Namibian communities directly.

## Is it legal to export?

Customs regulations vary. Verify that your purchase complies with both Namibian export law and your home country's import rules.

## Do I need a permit?

Certain items — including some woodcarvings and natural products — may require permits. When in doubt, don't buy it.

- ❏ **Strictly forbidden items include:** Ivory, animal skins or furs, stuffed animals, wild bird feathers, marine products (coral, shells, shark fin), traditional medicine from endangered species, caged primates, protected plants, illegally harvested wood, rare cultural artefacts and food/beverages containing endangered animals. **When in doubt — don't buy it.**

## What Our Guests Say

# Testimonials, FAQs & Partners

"Touristlads made our Namibia dream a reality — private 4x4, an incredible guide, and memories we'll never forget. The attention to detail was extraordinary from start to finish." — **Sarah & Tom H., London** ★★★★★

### What accommodation can I expect?

Hand-picked lodges, luxury tented camps and boutique hotels — all with en-suite bathrooms and carefully curated for comfort and character.

### Will wildlife roam near the camps?

Possibly, yes — and it's thrilling. Always follow your guide's instructions carefully. Safety briefings are given at each property.

### Can I request specific dietary needs?

Absolutely. We customise every menu in advance. Simply advise us on your booking form and our chefs will take care of the rest.

### What if I get sick or injured?

Immediate medical assistance will be arranged and, where necessary, transfer to the nearest hospital. Comprehensive travel insurance is essential and mandatory for all guests.

Touristlads partners exclusively with organisations that share our commitment to luxury, ethics and sustainability: **Travelife Partner** · **GSTC Member** · **Safari Deal Trusted Partner** and leading conservation organisations.

# Your Adventure Awaits

The red dunes of Sossusvlei, desert-adapted elephants of Damaraland, the vast Etosha Pan, Swakopmund's Atlantic charm and a billion stars overhead — your private Namibia safari is just around the corner.



## Iconic Wildlife Encounters

Big Five and desert-adapted species in their natural habitat — lions, elephants, rhinos, leopards and beyond.



## Starry Desert Nights

Namibia has some of the darkest skies on earth — fall asleep under the Milky Way after a day of extraordinary adventure.



## Stunning Destinations

Etosha · Sossusvlei · Swakopmund · Damaraland — and wherever the road takes you on your bespoke route.



## Your Expert Guide, Always

One dedicated guide-driver. Your vehicle. Your pace. Your story — entirely, beautifully private.

## Get in Touch

WhatsApp: Direct Link Web: [www.touristlads.com](http://www.touristlads.com) Email: [contact@touristlads.com](mailto:contact@touristlads.com)

## Safe Travels, Lads.

We can't wait to welcome you to Namibia. Travel privately, book with confidence, and see you on the red dunes.

TRAVELIFE PARTNER

GSTC MEMBER

SAFARI DEAL TRUSTED